

**RAGOZIN DATA & PUBLISHING**



***The Sheets***  
50 Years of Excellence

An Introduction and User Guide

# TABLE OF CONTENTS

## Part I

Letter from Ragozin .....	3
Basic Information on <i>The Sheets</i> .....	5
Where to get <i>The Sheets</i> .....	7
How to read <i>The Sheets</i> .....	8
1996 Belmont Stakes .....	9
Seminar tape order form .....	10
New Accounts .....	11
Customer Service .....	12
Recovery Lines .....	13
Bouncing .....	15
For Owners & Trainers .....	16
Examples .....	17

## Part II

The Press .....	24
-----------------	----

Ragozin Data & Publishing

44-02 11th Street, Suite 617 LIC, NY 11101 Tel: (212) 674-3123 Fax: (212) 674-3732

**Web:** [www.thesheets.com](http://www.thesheets.com) \***Online store:** [www.thesheetsonline.com](http://www.thesheetsonline.com) \***Email:** [info@thesheets.com](mailto:info@thesheets.com)

Welcome to our group,

***The Sheets*** are the most effective, efficient, and powerful handicapping tool available. These super-accurate performance ratings let you make quick, meaningful decisions about a thoroughbred's ability. Over the past thirty years, numerous professional handicappers and horse owners have attributed their success to ***The Sheets***.

This package is divided into two sections. The first section explains how to read ***The Sheets***. Start by reading the "Basic Information on ***The Sheets***." Learn how to find a horse's last race and figure out what the symbols placed to the left of the number mean. There are some sample sheets enclosed.

The second part of this package has press clippings about ***The Sheets*** and our followers. The articles from *The New York Times*, *Sports Illustrated*, *The Washington Post*, and other national journals are interesting and informative. A recent study by the Sport-Stat research firm, which confirms the quality of our figures, is summarized here.

To help serious players learn how to interpret the figures more successfully we have a series of instructional compact discs available. These CD's come with sample sheets. We charge ten dollars (\$10.00) per CD and many players are listening to them over and over again, finding them valuable and enjoyable. There is an order form for CD's inside. You'll also find a page enclosed telling you where to purchase ***The Sheets*** in your area. If you have any questions, just give us a call.

-- Len Ragozin

## 1924

..... "The Sheets" <sup>273</sup>

© Ragozin Data & Publishing - *The Sheets* 4

## Basic Information on *The Sheets*

You are now staring at a piece of paper with a lot of mysterious numbers on it and a horse's name on top. You have a lot of questions. I can't answer them all at once, but if you stay with me step by step, I think I'll finally cover everything you need to know.

*The Sheets* are very, very accurate performance ratings graphed on a page. When you purchase a set of Sheets you receive a page, or "Sheet," for every horse running at your track that day that has raced in North America.

Every time a horse runs a race it earns a rating on my sheet. If the horse is two years old, the figure goes in the column which occupies the left hand quarter of the sheet. Three-year-olds' figures are in the next quarter of the sheet -- just left of the center. Four-year-olds are in the third quarter of the sheet, just right of center; and five-year-olds are in the right hand quarter. Horses that are five or older have their recent races in the rightmost column, and their prior years work backwards on the Sheet. The very oldest races are dropped from the left.

So, the most recent races are always in the column furthest to the right. Within each column, the most recent race is on top -- just as in the Racing Form. So, **the most recent race is the figure in the furthest right column and is the highest-up race in that column.** There is also a line indicating today's date, and the age and sex of the horse, which serves as a target for where today's race figure would go. How high up the race is on the sheet indicates the date it was run. On most sheets you can see the names of the months in the margins. Races halfway up the sheet were run in June; later months are higher up, and earlier months are lower down. Each grey or white stripe is a space of six days.

The arrangement of *The Sheets* is very helpful in handicapping, because it shows you very clearly how much time off the horse has taken between races. Unusual layoffs, for instance, will stick out, and of course are a big danger sign, especially on cheaper horses. A slight extra rest for a healthy horse, on the other hand, may be a big plus. So, where each number is on the sheet tells you how old the horse was when that race was run, and what the date was.

The rating figure is the larger figure which precedes the crowded sequence of letters and numbers at the right. Now, what do these ratings mean? Each figure shows how much quality the horse demonstrated on that day. Briefly, the rating includes speed, weight, allowance for unusual track condition, racing wide or saving ground, headwinds or tailwinds, peculiarities of track construction such as downhill areas, etc. The numbers generally range from zero to the forties. The **lower** the figure the **better** the race. The numbers measure how far away from a championship rating (zero) this horse was on this day.

Roughly speaking, a horse who runs a 12 will beat a horse who runs a 13 by something between one and two lengths. A horse who ran a 20 would trail these two but be a length or two ahead of a horse who ran a 21; and so forth. A champion horse, who runs in the low single figures or, on his best days, a zero, would be far ahead of these. I used the words "roughly speaking" because a good number does not always come in ahead of a poorer number. These figures measure, as I said, the quality which the horse demonstrated -- that is, the physical effort which it put out. If a horse carries more weight than an opponent, or races wider than an opponent, or hesitates at the start while the others get off well, he can run a superior effort while finishing behind a horse who actually ran a race of poorer quality.

My figure measures the horse's effort very accurately. Some of that effort may have been "wasted" overcoming certain obstacles, as mentioned, and you may see races where the horse who earned my best figure in that race did not win. But the figure measures accurately what the horse did physically, and this makes it possible for you to make meaningful judgements about its condition and ability, without being misled by a lucky win or an unlucky loss. Of course, some of the most exciting bets

develop from races where a horse earns a good figure in a race which looks bad in the Daily Racing Form. Don't worry -- the figure is correct.

Naturally, once you think you have narrowed today's race down to the horses who figure to run well, you will have to look out for situations where a poorer number is likely to beat a better number. That is, a horse whose post-position and running style make him a likely ground-saver today should get a subtraction of a half-point to a point. Add one to two points to the figure you project a horse will run if you think he will race wide.

As for weight: for horses who are carrying more than 115 pounds **today**, add a point for each five pounds to the number you project the horse will run today; for lightweights, subtract a point for each five pounds under 115. (Pay no attention to what the horse carried in previous races -- we already allowed for that in the figure.)

Generally speaking, such corrections are much less important than figuring out who is in good condition and has good enough figures to be a contender, and then betting those whose odds seem generous in relation to the likely competition.

We have held a series of seminars designed to help in interpreting the patterns on *The Sheets*. The seminars can help you spot a horse who is in good condition and ready to run a top effort. Tapes of the seminars are available on audio cassette. We sell them at cost and encourage you to listen to them.

Now let's get back to the layout of *The Sheets*. As you follow a horse's history, reading the figures upward in each column, you will see that the figures are not stacked neatly on top of each other like Racing Form speed-ratings. They're graphed from left to right. The better races are further left; the bad races are placed to the right. Thus you can see a horse travel in and out of form by watching the line of figures move to the left or right. You can spot erratic horses (often physically unsound horses) whose good races are often sandwiched between horrible efforts. You can see how young healthy horses improve in surges. You can spot hard-hitting, consistent horses at a glance.

No doubt you have noticed that the numbers are not "clean" figures -- there are some little marks before and after. What are they? The tiny figures just after the big figures are merely fractions. A quote mark (") after the number equals half a point. A plus sign (+) is one-quarter of a point. A minus sign (-) means one-quarter less. Thus 15- is 14 and three-quarters. In front of the number, an equal sign (=) means the race was on the turf. Dots to the left of a number indicate some type of wet track. Other adverse conditions have their own symbols. See the symbol sheet for a complete explanation. The symbols placed to the left of the figure are more important than the symbols found at the far right.

Occasionally, a horse may run races for which we don't have a number. This may happen for one of several reasons. The horse may be running back on short rest, and we may not have had time to produce a number for the most recent race. Or, the horse may have raced at one of the few tracks we don't cover. In this case it will have a comment denoting that fact. For foreign horses, we'll give you the horse's lifetime win/2<sup>nd</sup>/3<sup>rd</sup> and earnings records.

Once again, if you plan to use *The Sheets* I encourage you to listen to at least a few of the seminar tapes. If you have any questions call (212-674-3123) any day after 10:30A.M., or visit our website at <http://www.thesheets.com>

Good luck!

—Len Ragozin

## **Where to get The Sheets**

**The Ragozin Sheets are available at these locations, by email, FedEx and online at [www.thesheetsonline.com](http://www.thesheetsonline.com).  
Call us at 212-674-3123**

### **New York -**

Aqueduct - Clubhouse Racing Form Stand. (First Floor)

Belmont - 3rd Floor Clubhouse at Reserved Seat Sales. (Newsstand in Clubhouse during Saratoga)

Saratoga - Reserved seat sales: in the Clubhouse and Grandstand.

Saratoga - Five Points Market & Deli, 42 Park Place, Saratoga Springs, NY 12866 (518) 584-1000

Nassau County - Race Palace, 1600 Round Swamp Road, Plainview, NY

### **New Jersey -**

Meadowlands - Tout Sheet stand at the foot of the escalator. (Grandstand)

Monmouth Park - Program stand in Clubhouse. (Live racing days only).

### **Florida -**

Calder - Clubhouse Tout Sheet Stand. (Year Round)

Gulfstream - Circle Newstand, 1717 East Young Circle, Hollywood, FL 33020

Palm Beach Kennel Club Via email. 561-683-2222.

### **Illinois -**

Red Rooster Pantry - 827 Wilke, opposite Arlington. Saturday tracks only. Tel: 847-870-8898

Arlington Park - Clubhouse Entrance Tout Stand. (Live meet only).

### **Southern California -** (Santa Anita, Hollywood & Del Mar at all locations).

Santa Anita Valentine's Liquor 924 S. Baldwin Ave., Arcadia (626)-446-6347

Los Angeles - "National News" International News Stand: 11203 National Blvd, Los Angeles, CA 90064 (310)-312-0405. (Northwest corner of National & Sepulveda, right off the 405)

Del Mar Qwik Korner Market—731 South Highway 101, Solana Beach, CA 92075 (858)-755-3491

(1/2 mile north of track, in shopping plaza at Via De La Veille. Open 24 hours) - Live meet only.

*Northern Cal Track available at all sites.*

### **Pennsylvania -**

Turf Club - 7th & Packer. (Year round). (609) 923-9716

### **Maryland - *Friday/Saturday only.***

Laurel - The lobby of the front entrance to the grandstand. (Year round)

Pimlico - 12 - 2 PM at the grandstand entrance behind the racing form stand. (When Pimlico is running)

### **Kentucky -**

Keeneland Race Course - Available via email year round. See Jim Goodman in the simulcasting department. (859)-288-4261

### **Boston -**

Suffolk Downs - Available via email only. *Inquire at Daily Racing Form Stand.*

### **Las Vegas - (*email only*)**

Wynn's Casino Horse Book - Sheets available for download.

LAST UPDATED  
**01/02/2014**

# HOW TO READ THE SHEETS

## RAGOZIN SYMBOL SHEET

June '08

The LOWER the number, the better the race. One year of races per column.  
The most recent race is at the top of the rightmost column.  
SYMBOLS: Generally, the symbols before the figure are more important than symbols after the figure.

BEFORE	AFTER
◇ PolyTrack	& claimed by... w/initials
= turf	initials in caps = hot trainer
^= good turf	s off poorly <2 lengths
.= yielding turf	S off poorly 2-4 lengths
:= soft turf	D dwelt >4 lengths
ˆ wet fast	P pace too slow (unadjusted)
^ good, slow	Z bled
. wet, sloppy, muddy	J lost jockey
: very bad wet track	m mud caulks
.. very slow track	b buried race (better than looked)
.. / ploughed up after freezing	Q switched off turf
.. heavy track	w won race
/ frozen track	< bar shoe on
r rain	> bar shoe off
s snow	( shoes on
F 1st lasix	) shoes off
g heavy gusting wind	R ran off before race
G very heavy gusting wind	\$ bet for no obvious reason
~ approximate	G unruly at the gate
X~ fig. stretch call	B bore in/bore out
P~ adjusted for slow pace	K lame/broke down
circle = missing number	k sore
XX = Did Not Finish	t small trouble
	T big trouble
+ is a quarter-point	n no lasix used
- minus quarter-point	L back on Lasix
ˆ is a half-point	] blinkers off
	[ blinkers on
	V 4 or more horse-widths wide on final turn
	v 3-3.5 horse-widths wide on final turn
	Y rail trip on final turn
	E Fell during race
	u wore bend shoes
	f fell back sharply after start

HERE ARE EXAMPLES OF THE TYPE-STYLES USED AND THE DISTANCES THEY REPRESENT:

less than 5 furlongs	<i>11 22 33 44</i>	Trainer initials:
5 - 5.5	11 22 33 44	3 capital letters = 3 initials.
6	11 22 33 44	2 caps and 1 small = 2 initials
6.5 - 7	11 22 33 44	+ last letter of the last name.
7.5 - 1mile 40yards	11 22 33 44	To avoid duplications, some
1mile 70yards - 1 1/8	<b>11 22 33 44</b>	trainers don't use these rules.
1 3/16 - 1 1/4	<b>11 22 33 44</b>	
over 1 1/4	<b>11 22 33 44</b>	

To the FAR RIGHT is information about the class of race and where and when it was run. The first two characters indicate the class. MS - Maiden race, AW - Allowance/Handicap/Stakes, aw - Starter Allowance.

If there's a number, that was the approximate claiming price of the race.  
For example 10AP29 means a \$10,000 claiming race at Arlington on the 29th of the month. For missing races, a summary is provided. "Rui 5X 2/0/1" means five races at Ruidoso Downs. The horse won twice & finished third once.  
If there's a dollar amount, that's the purse money earned for those races.

Len Friedman, our  
premier handicapper,  
hits the 1996 Belmont  
cold --

1-2-3 in his  
Racing Form  
analysis!

by LEN FRIEDMAN

*Special to Daily Racing Form*

The final leg of the Triple Crown road features an overflow field swelled by the mistaken view of several late entrants that this is a weak crop of 3-year olds.

The Derby and Preakness featured excellent performances by several horses in each race, and the Belmont figures to produce more of the same.

The first step in handicapping the Belmont is to eliminate the horses who have not been competitive with the top 3-year olds. Traffic Circle, Secreto de Estado, Saratoga Dandy, Rocket Flash, Latin Reign, and English import South Salem all fall well short of the top contenders. Natural Selection is slightly faster than the above group but figures to be more likely to retreat from his last effort (by far his best race to date) than he is to make a forward move, which would only make him a marginal contender at best.

Appealing Skier is somewhat faster than the first group, but he also figures to go back off his last effort and further has shown no indication he wants to go two turns, much less a mile and a half.

The tough part is sorting out the remaining eight horses who have shown at least once the ability that will be needed to hit the board in the Belmont. In reverse order (with our fingers crossed):

8. Prince of Thieves: His Derby effort places him close in ability to the top horses, but his Preakness bounce puts in question whether he can come back to top form this soon. His strong overall development may make him a strong contender as the year winds on, but we'll pass on him for the Belmont.

7. Jamies First Punch: The "now" horse off his powerful race defeating Unbridled's Song is coming back just under two weeks from that effort and is likely to react with a significantly poorer performance. Another horse to look for down the road.

6. Cavonnier: The horse who surprised us with a big effort in the Kentucky Derby went back off that effort, as we expected, in the Preakness. His Derby figure would give him a good chance to win the Belmont, but he is not likely to be able to put in a peak performance immediately following the two toughest races he has run. At relatively short odds, another pass.

5. Louis Quatorze: Our selection for the Derby showed the promise indicated by his development pattern on the *Ragozin Sheets* by exploding to a big new top in the Preakness. While there is a good chance he will go back from that effort, his overall pattern of development remains very strong. The ability he showed at 2 and earlier this year gives him at least a 20 percent chance to repeat his Preakness

effort and another 20 percent chance to react only slightly to that effort, either of which scenario would put him on the board in the Belmont. Unless he is under 3-1, he's a horse to use in the exotics.

4. In Contention: A horse who we always thought had a forward move in him looks ready to pop in an improved effort. His Preakness was an improvement over his Derby and the extra three weeks give him a chance to confirm the promise he showed in the Wood Memorial by hitting the board in the Belmont at huge odds. Definitely a horse to use in the exotics.

3. My Flag: The filly starts off a little slower (even after adjusting for the weights) than the top male contenders, but her pattern of development coming into the Belmont gives her the best chance of any horse to run a lifetime best. Her second and third races back were a slight improvement over her best as a 2-year-old, and indicated even better performances were soon to come.

Her last off effort, which came on two weeks' rest, can be excused. On five weeks rest in the Belmont, My Flag should be ready to put in the race of her life. At 10-1 or better, a definite value play and a must-use in the exotics.

2. Skip Away: The horse with the best number (his Blue Grass victory) of any in the race comes off a strong Preakness performance, which followed the bounce effort we expected from him in the Derby. While it is probably too soon to confidently expect him to return to his top effort, he could easily repeat his Preakness performance, which would make him a very strong contender in the Belmont. While he is not likely to go off at odds long enough to justify a win play, he should be included in all exotics.

1. Editor's Note: Not wishing to repeat my error of switching off my Derby selection in the Preakness, I'll stick with my Preakness selection in the Belmont. Editor's Note reacted slightly to his Derby effort on two weeks' rest in the Preakness, but now gets three more weeks off in preparation for what may be the peak race of his career.

He has the most solid and consistent line of any of the contenders and at an expected 10-1 or higher is the best value in the race. While he has already put in more good races in a row than any 3-year-old in recent years (without winning any of them), and therefore might seem due for an off effort, my view is that his consistency is an indication that he has ability that has not yet been shown.

For more information on the *Ragozin Sheets*, call (212) 674-3123 or visit [www.thesheets.com](http://www.thesheets.com) on the web.

# Audio Seminars on Compact Disc

Here is a list of the seminars we have available on audio CD. All seminars were led by Len Friedman. Len Ragozin was often on hand to add to the discussion. We suggest new players start with seminars 1, 2, 7 and 15.

There is no charge or shipping fee for Seminar #1, which is part of this introductory kit and also available for download at [www.thesheets.com](http://www.thesheets.com). All other seminars cost ten dollars (\$10) each, including shipping.

We can ship to any address in the continental United States but not to Post Office boxes. Seminars are usually shipped via FedEx Ground service. Please allow 10 - 14 days for delivery.

For information about shipping to Canadian or foreign addresses or express shipping, please call us at 212-674-3123.

## OUR LIST OF SEMINARS ON COMPACT DISC

- 1 Introduction and Basics. : *The most fundamental way of getting an edge from **THE SHEETS***
- 2 Intro to Condition Handicapping. : *Excellent, clear analysis of how experts play. Recommended for everyone.*
- 3 Condition analysis continued.: *More examples of forward-going horses.*
- 4 Explosive, forging, and recovery lines. Part I.
- 5 Explosive, forging, and recovery lines. Part II.
- 6 Explosive, forging, and recovery lines. Part III.
- 7 Turf Racing.: *A must for everyone, would-be expert or casual player.*
- 8 Layoff lines.: *Good stuff, though somewhat technical.*
- 9 Two-year-olds, and "short" line horses.: *A look at horses with very few races.*
- 10 A Day at the Races.: *Friedman goes over a day's card.*
- 11 Two-year-olds.: *An in-depth analysis of various two-year-old patterns.*
- 12 Reviewing a past seminar, and notes on winter racing.: *Wherein we find out if the horses agreed with LF's analysis.*
- 13 Lasix and other topics.: *Like it sounds. Includes notes on the "0-X" pattern.*
- 14 Doesn't exist. No tape was made.
- 15 Betting strategies.: *A very useful tape that might change the way you play the game.*
- 16 An analysis of the 1990 Kentucky Derby

NO P.O. BOXES PLEASE

Circle the CD(s) you desire.

Name: \_\_\_\_\_

1 2 3 4 5 6 7 8 9 10 11 12 13 15 16

Address: \_\_\_\_\_

City/State/Zip: \_\_\_\_\_

**Send to:** Ragozin Data & Publishing LLC  
44-02 11th St. Suite 617  
Long Island City, NY 11101

total number of CD's \_\_\_\_\_  
@ 10.00 per CD

Please make checks payable to Ragozin Data & Publishing LLC. Total amount enclosed \_\_\_\_\_

Method of payment: ☐ Visa ☐ Mastercard ☐ Cash/Check (Advance payment only)

Credit Card Number \_\_\_\_\_ Expiration Date: \_\_\_\_\_

Telephone # (required for credit card orders) \_\_\_\_\_

Email Address (required if you want confirmation by email) \_\_\_\_\_

## NEW ACCOUNTS

*To all prospective customers,*

We sell ***The Sheets*** at or near most major racetracks. We can also send sheets directly to you via Fed Ex. If you order ***The Sheets*** at least two days in advance, we can get them to you the day before the races, giving you the evening before to handicap.

WE PREFER THAT YOU ORDER SHEETS ONLINE. THIS SAVES YOU MONEY AND SAVES US EXTRA WORK

## SHIPPING

We send ***The Sheets*** priority delivery. Priority is guaranteed by 10:30 AM the next day, 12:30 PM on Saturdays. \$35 for 1 set, \$65 for 2 sets, \$90 for 3 sets and \$20 for each additional set after the third.

We can also send The Sheets to your local Fed Ex office, and you can pick them up there. In that event, delivery is guaranteed by 9:00 AM the next day.

### TYPICAL SHIPPING CHARGES

For Saturday delivery to your home:  
\$40

Priority for Mon-Fri delivery  
\$30

If you have your own Fed Ex account, we prefer that you ship ***The Sheets*** on that account.

We generally do not ship Federal Express to Canada. Canadian customers should contact us about shipping options.

## FAXES, EMAILS AND ON-LINE PURCHASES

### **The Sheets via fax or email:**

The cost for this option is as follows:

\$40 for 1 set, \$70 for 2 sets, \$100 for 3 sets.

Prices for 4 or more sets a day available upon request.

Individual prices are \$5 per race, minimum charge of \$15.

### **The Sheets via our online store:**

The Sheets can be purchased online at [www.thesheetsonline.com](http://www.thesheetsonline.com).

Online prices are:

\$35 for 1 set, \$65 for 2 sets, \$90 for 3 sets and \$20 for each additional set after the third.

Individual races cost \$5 each, with a minimum charge of \$15.

## PAYING FOR THE SHEETS

We take Visa, Mastercard, and American Express. If you plan your order far enough in advance, we accept checks and money orders.

## Customer Service

When you use ***The Sheets*** you get our forty years of experience in thoroughbred racing. At many tracks we have representatives who can assist you in learning how to use ***The Sheets***. These reps often host on-track discussion groups where players share handicapping ideas and talk about which horses they like on the day's card. These groups are open to anyone with ***The Sheets***.

Players can also call our office directly with questions about specific races. However, we can only discuss a race usefully if players have the sheets in front of them when they call.

In addition, we occasionally hold seminars in various cities. There will be notices in ***The Sheets*** and in the Daily Racing Form informing you of upcoming seminars in your area. The seminars usually consist of thirty minutes of beginner level instruction, followed by an analysis of that day's card.

Here is a list of our local representatives. They can answer your questions about the best way to get The Sheets in your area, or assist you in learning how to use ***The Sheets***. If you call with questions about a specific race, or about an entire card, it is expected that you already have ***The Sheets*** for that day.

-- Len Ragozin

Representative	Phone	Circuit
Main Office	(212) 674-3123	All
Jon Hardoon	1 (310) 261-1039	Southern California and Saratoga
Charlie Nebel	(954) 989-3324	Florida
Norm Wiesen	(609) 923-9716	South Jersey/Philadelphia

You can also contact us with questions or comments via email at  
**info@thesheets.com**  
or at our website, at  
**<http://www.thesheets.com>**

## Len Friedman on RECOVERY LINES:

Study the sheets on the following page:

**Quick Dip** has a classic recovery line. The pattern indicates that the horse is ready for a forward move. When a horse comes back from a layoff, runs somewhere between three and six points off its effective top, then smoothly circles down to the “first out” effort (or slightly breaks through), the horse is likely to make a strong forward move to its previous year’s top.

Also note that the numbers between the 14’s form part of a “perfect circle”. If there had been an 18 between the 17+ and second 14, the line would not indicate that strong move.

**Fast Step** has a similar line with some notable differences. **Fast Step’s** 13+ is a half-point worse than the 13- off the layoff. Furthermore, the 13’s are only two points off the horse’s lifetime top. That’s too close for a classic recovery line.

Since **Fast Step** is a sound four year old though, it is possible he can run a *new* top. However, *in this race*, he’s less likely for a forward move than **Quick Dip**. Since we project an 11 for **Quick Dip**, discounting the odds and other external variables, **Quick Dip** is the stronger horse. Don’t give up on a strong recovery line. Even if **Quick Dip** did throw in a poor race, you can look to play him next out.

*There is much more about this subject in Len Ragozin’s book **The Odds Must Be Crazy**, and on the seminar tapes*

## RAIL TRIPS AND WIDE TRIPS

The Sheets tell you if a horse has raced near the rail or has raced wide. The symbol appears to the right of the number.

Capital “V” for very wide (4 or more horse-widths from the rail).

Small “v” for 3 to 3½ widths.

Capital “Y” for horses running on the rail or ½ width off of the rail.

In races with more than one turn, this information applies to the last turn only. The horse’s path on the first turn of a route is so influenced by post position that first-turn information can be misleading as to the horse’s true running-style tendencies.

## Some recommendations on how to use this data:

Horses will save or lose ground for many reasons. Post position, size of the field, jockey, and the number of speed horses or closers in the field may produce a V or a Y that has nothing to do with what that horse’s running style would usually produce. Therefore, you should only draw conclusions when you see a horse that *often* gets V’s or Y’s.

As a general rule we would add ½ to 1½ points to a horse’s projected figure for today’s race depending on how wide we predict the horse will be. With a high post position today we might add even more.

In other words, make the large correction only when the horse is often wide (has many V’s), and has drawn an outside post today.

If we conclude that a horse is likely to save ground today, we give it credit for a better figure in today’s race. As a general rule we would subtract ½ to 1 point from the horse’s projected figure for today’s race. Make the 1 point correction only when a horse often saves ground, (many Y’s) and has drawn inside today. Naturally you will be influenced by today’s post position and the running style of the horses who are inside the horse you are considering.

Although the accuracy of our graphed ratings is still the bedrock of our business, we now provide over forty types of other information that might affect a horses’s performance to help you refine your handicapping decisions.

[illegible]

# BOUNCING

Bouncing has become a common term in the handicappers vocabulary. Ragozin invented the term when he became aware of this phenomenon over thirty years ago. Many profitable Sheet plays are based on throwing out a short-priced favorite that figures to bounce.

Simply put, a bounce is a reaction to a previous effort. When a horse usually runs 20's or mid-teens and suddenly runs a 10, it is likely to **bounce**. Remember, horses are athletes — when they overextend themselves they are likely to react to the physical toll that this overextension took on them.

There are numerous reasons why a horse may make a big move forward. The horse might be new to lasix, have a new trainer, be racing on a new surface, be wearing new equipment, getting over physical problems, or might just be maturing and developing. The reason for the big forward move will have an impact on the degree with which you can expect the horse to bounce. Each case must be considered individually, though there are some general guidelines on how severe a reaction might be expected. The chart below will help you in assessing a horse's chance of bouncing after a strong effort.

<i>More likely to bounce</i>	<i>Less likely to bounce</i>	<i>comments</i>
<b>Sprinters</b>	<b>Routers</b>	Router's lines are more even. Trainers tend to put unsound "ouchy", bouncy horses in sprints.
<b>Dirt</b>	<b>Turf</b>	Grass is a kinder surface. Many horses can run a long string of solid races on the turf.
<b>Big move</b>	<b>1-3 point move</b>	The greater the forward move, the more likely the chance of a negative physical reaction.
<b>Autumn</b>	<b>Spring</b>	Condition plays a greater role later in the season. After a long hard campaign many horses might be more likely to bounce. Horses are more likely to explode with a series of new top efforts in the spring/summer.
<b>Females</b>	<b>Males</b>	Females react more to big efforts. However, classy fillies/mares tend to be nearly as consistent as males.
<b>Other than →</b>	<b>Young 3yo males</b>	First half of 3yo year is period of unusually rapid development for many males.
<b>Short rest</b>	<b>Time off</b>	More rest allows a horse more time to recover.
<b>Claimers</b>	<b>Stakes horses</b>	Classy horses generally get a better handling, more rest, and are able to withstand strong efforts.

## *The Sheets* A Guide For Owners

The accuracy of *The Sheets* lets you evaluate the condition of a thoroughbred as well as its ability. Over the past 35 years we have purchased or recommended the purchase of many horses, some of which went on to become stakes winners.

This success story begins in 1972 when Harry Ragozin (Len's father) claimed Sunny And Mild (on Len's recommendation) for \$12,000 at Monmouth Park. The horse went on to win The Queens County Handicap at Aqueduct -- setting a track record!

*The Sheets* let you see subtle changes in a horse's condition. Small improvements often signal that a horse is ready for a series of unusually good efforts. This approach enables us to isolate horses of uncommon value -- horses that are racing for far less than what they are worth. The following stakes winners were all claimed or acquired for moderate sums (three were purchased privately) in the 1970s and 1980s, mostly on the recommendations of Len Friedman and Len Ragozin. While not all of our recommendations have worked out this well, we don't think anyone else can boast having purchased so many low to medium priced claimers and seeing them develop into stakes horses.

STAKES WINNERS	
AMERI VALAY	SUNNY AND MILD
PASSING SHIPS	DOUBLE ARTEMIS
PAPPAS SWING	PRETTY TRICKY
PAROCHIAL	SUMMER TALE
LAYOVERNITE	POPPY'S LEGEND
KILLER JOE	LIKELY PASSAGE
ROCK LIVES	SWEET MISSUS
SUNNY WINTERS	LIZ MATIZZ
MOUSE CORPS	MAIN STEM
FRAMPTON DELIGHT	CORPORATE HEADACHE
SUNSHINE 'N SEVEN	WAIT FOR THE LADY
BALOTRA	GINNY LYNN

STAKES PLACED	
SAGA	HABERDASHER
FORTY KINGS	BEST VENTURE
FLUCTUATING	INCOME PAX
COPPER DIVA	FERME NEUVE
CHRISTIME	

During the past 15 years horses claimed and bought on our recommendation have shown excellent results, including many Graded Stakes winners. Some were claims, including **Hot Wells** (\$12,500 claim who won the \$75,000 Grade III Southwest Stakes) and **Halory Leigh** (\$75,000 claim who won the \$325,000 Grade II Fall City Handicap) and some were private purchases, including **Ginny Lynn** (\$100,000 purchase who earned \$450,000 in less than a year and was then sold for \$450,000), **Austin's Mom** (\$125,000 purchase who won the \$100,000 Grade III Affectionately Stakes and was then sold for \$325,000), **On A Soapbox** (\$100,000 purchase who won the Grade I Coaching Cup Oaks and was then sold for \$1,000,000) and **Nite Dreamer** (\$350,000 purchase who became a Graded Stakes winner of just under \$1,000,000).

On the following pages, we've reproduced *The Sheets* on some of these horses to explain what tipped us off to their concealed value. The concepts can be useful for buying horses or for betting horses.

# Len Ragozin on **PAPPAS SWING**:

**Pappas Swing**, even before he got onto the grass, showed soundness by refusing to throw in any races which were more than a few points off whatever his best ability was at the time. Additionally, he was improving a few points every month or two, as a healthy young horse will often do.

In his first venture on the turf course, **Pappas Swing** showed he liked it and continued his pattern of steady improvement, running a 14-. But the minor allowance race he was in was full of horses trying the grass for the first time, and quite a few of them jumped up. He didn't get a check, so he was returned to a claimer next out. By now his ability, soundness and versatility made him a big bargain. Our client, Gold'N'Oats Stable, claimed him.

In 1988, as is the case in many years, there were a limited number of authentic three-year-old grass stakes-caliber horses. One of the advantages of our nationwide rating and computer system is that we can determine the strength of any particular division of horses at any track coast to coast. We looked around the country for good spots and saw that the Chicago three-year-old grass performers were especially weak. **Pappas Swing** was pointed for the \$150,000 added Grade III Hawthorne Derby, which he won. On the same weekend, a \$75,000 New Jersey race (our alternative), went much faster!

In all, **Pappas Swing** won three stakes and an allowance race in six starts for Gold'N'Oats Stable. After winning the graded stake we started looking to sell the horse. We assumed other owners would overvalue him. Once the horse got to an 8+ we didn't think he would get any better, and even if he ran occasional 8's as a four-year-old, we didn't think that would make him worth \$200,000. As you can see from his Sheet our timing was perfect.

Len Ragozin				
--- "The Sheets"				
3 RACES 87	18 RACES 88	16 RACES 89	PAPPAS SWING	12 RACES 90
26- 23- 23"	4128 H117 H128	WAFG17 -11+ WAFG18 -15- WAFG19 -13- WAFG20 -14- WAFG21 -15- WAFG22 -16- WAFG23 -17- WAFG24 -18- WAFG25 -19- WAFG26 -20- WAFG27 -21- WAFG28 -22- WAFG29 -23- WAFG30 -24- WAFG31 -25- WAFG32 -26- WAFG33 -27- WAFG34 -28- WAFG35 -29- WAFG36 -30- WAFG37 -31- WAFG38 -32- WAFG39 -33- WAFG40 -34- WAFG41 -35- WAFG42 -36- WAFG43 -37- WAFG44 -38- WAFG45 -39- WAFG46 -40- WAFG47 -41- WAFG48 -42- WAFG49 -43- WAFG50 -44- WAFG51 -45- WAFG52 -46- WAFG53 -47- WAFG54 -48- WAFG55 -49- WAFG56 -50- WAFG57 -51- WAFG58 -52- WAFG59 -53- WAFG60 -54- WAFG61 -55- WAFG62 -56- WAFG63 -57- WAFG64 -58- WAFG65 -59- WAFG66 -60- WAFG67 -61- WAFG68 -62- WAFG69 -63- WAFG70 -64- WAFG71 -65- WAFG72 -66- WAFG73 -67- WAFG74 -68- WAFG75 -69- WAFG76 -70- WAFG77 -71- WAFG78 -72- WAFG79 -73- WAFG80 -74- WAFG81 -75- WAFG82 -76- WAFG83 -77- WAFG84 -78- WAFG85 -79- WAFG86 -80- WAFG87 -81- WAFG88 -82- WAFG89 -83- WAFG90 -84- WAFG91 -85- WAFG92 -86- WAFG93 -87- WAFG94 -88- WAFG95 -89- WAFG96 -90- WAFG97 -91- WAFG98 -92- WAFG99 -93- WAFG100 -94- WAFG101 -95- WAFG102 -96- WAFG103 -97- WAFG104 -98- WAFG105 -99- WAFG106 -100-	50R10 -12+ 50R11 -13- 50R12 -14- 50R13 -15- 50R14 -16- 50R15 -17- 50R16 -18- 50R17 -19- 50R18 -20- 50R19 -21- 50R20 -22- 50R21 -23- 50R22 -24- 50R23 -25- 50R24 -26- 50R25 -27- 50R26 -28- 50R27 -29- 50R28 -30- 50R29 -31- 50R30 -32- 50R31 -33- 50R32 -34- 50R33 -35- 50R34 -36- 50R35 -37- 50R36 -38- 50R37 -39- 50R38 -40- 50R39 -41- 50R40 -42- 50R41 -43- 50R42 -44- 50R43 -45- 50R44 -46- 50R45 -47- 50R46 -48- 50R47 -49- 50R48 -50- 50R49 -51- 50R50 -52- 50R51 -53- 50R52 -54- 50R53 -55- 50R54 -56- 50R55 -57- 50R56 -58- 50R57 -59- 50R58 -60- 50R59 -61- 50R60 -62- 50R61 -63- 50R62 -64- 50R63 -65- 50R64 -66- 50R65 -67- 50R66 -68- 50R67 -69- 50R68 -70- 50R69 -71- 50R70 -72- 50R71 -73- 50R72 -74- 50R73 -75- 50R74 -76- 50R75 -77- 50R76 -78- 50R77 -79- 50R78 -80- 50R79 -81- 50R80 -82- 50R81 -83- 50R82 -84- 50R83 -85- 50R84 -86- 50R85 -87- 50R86 -88- 50R87 -89- 50R88 -90- 50R89 -91- 50R90 -92- 50R91 -93- 50R92 -94- 50R93 -95- 50R94 -96- 50R95 -97- 50R96 -98- 50R97 -99- 50R98 -100-	50R10 -12+ 50R11 -13- 50R12 -14- 50R13 -15- 50R14 -16- 50R15 -17- 50R16 -18- 50R17 -19- 50R18 -20- 50R19 -21- 50R20 -22- 50R21 -23- 50R22 -24- 50R23 -25- 50R24 -26- 50R25 -27- 50R26 -28- 50R27 -29- 50R28 -30- 50R29 -31- 50R30 -32- 50R31 -33- 50R32 -34- 50R33 -35- 50R34 -36- 50R35 -37- 50R36 -38- 50R37 -39- 50R38 -40- 50R39 -41- 50R40 -42- 50R41 -43- 50R42 -44- 50R43 -45- 50R44 -46- 50R45 -47- 50R46 -48- 50R47 -49- 50R48 -50- 50R49 -51- 50R50 -52- 50R51 -53- 50R52 -54- 50R53 -55- 50R54 -56- 50R55 -57- 50R56 -58- 50R57 -59- 50R58 -60- 50R59 -61- 50R60 -62- 50R61 -63- 50R62 -64- 50R63 -65- 50R64 -66- 50R65 -67- 50R66 -68- 50R67 -69- 50R68 -70- 50R69 -71- 50R70 -72- 50R71 -73- 50R72 -74- 50R73 -75- 50R74 -76- 50R75 -77- 50R76 -78- 50R77 -79- 50R78 -80- 50R79 -81- 50R80 -82- 50R81 -83- 50R82 -84- 50R83 -85- 50R84 -86- 50R85 -87- 50R86 -88- 50R87 -89- 50R88 -90- 50R89 -91- 50R90 -92- 50R91 -93- 50R92 -94- 50R93 -95- 50R94 -96- 50R95 -97- 50R96 -98- 50R97 -99- 50R98 -100-

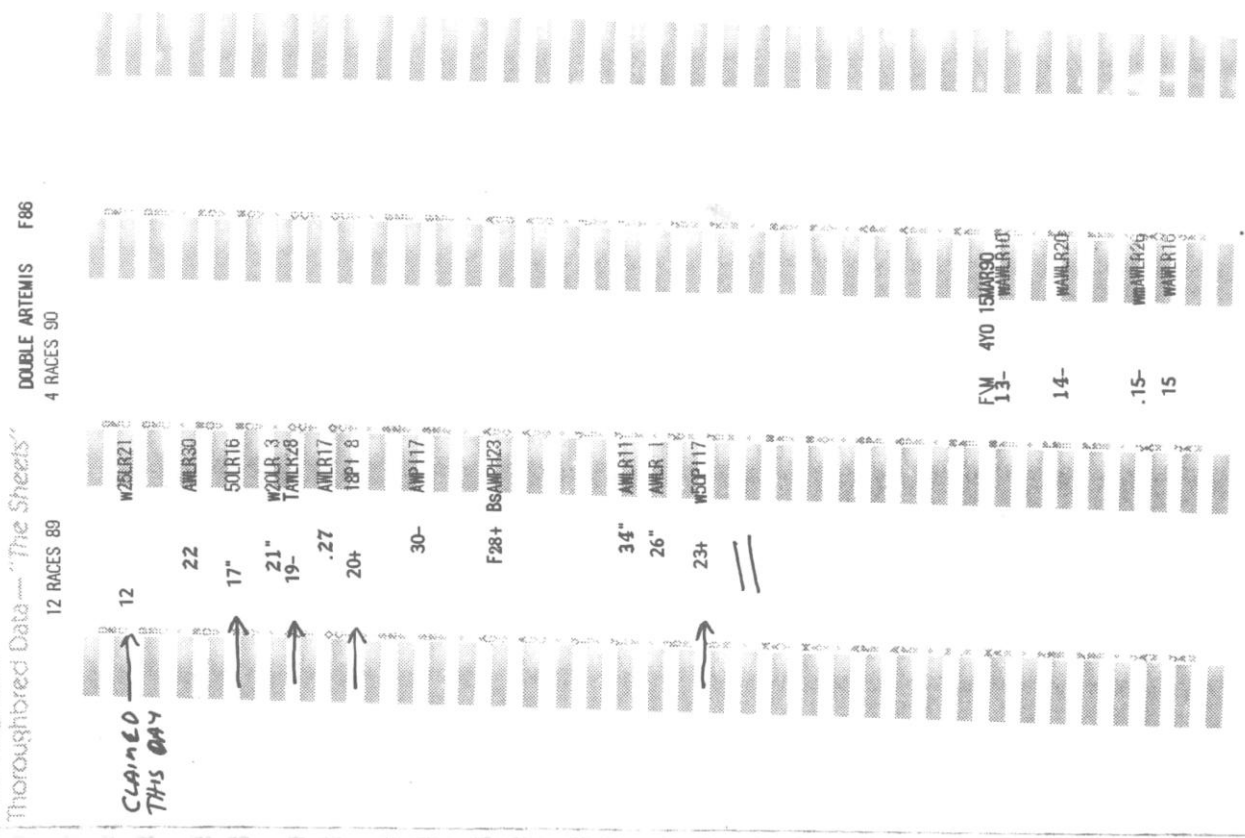


## Len Ragozin

Morogothored Data — "The Sheets"

12 RACES 89

CLAIMED  
THIS DAY



# Past Performance for Double Artemis and chart for Laurel race 10, 3/10/1990...

10

LAUREL

7 FURLONGS  
LAUREL

7 FURLONGS. (1.21%) 22nd Running THE CONNIVER HANDICAP. Purse \$60,000 Guaranteed. A Handicap for Fillies and Mares. 3-year-olds and upward. (Registered Maryland-breds.) By subscription of \$50 each, which should accompany the nomination, \$300 to pass the entry box, \$300 additional to start, with \$60,000 Guaranteed, of which 60% to the winner, 20% to second, 11% to third, 6% to fourth and 3% to fifth. Weights five days before the race. Field will be limited to fourteen (14) starters with preference to high weights on the scale. Four (4) horses may be placed on the also eligible list. Starters to be named through the entry box by the usual time of closing. Trophy to the owner of the winner. Closed Thursday, February 15, 1990, with 28 nominations.

## Double Artemis

Own.—Bassford Elaine L

20Feb90-9Lrl fst 6f	:22%	:46	1:17%
26Jan90-4Lrl sly 6f	:22%	:45%	1:11%
16Jan90-9Lrl fst 6f	:22%	:46%	1:11%
21Dec89-8Lrl fst 6f	:22%	:45%	1:11%
30Nov89-9Lrl fst 6f	:22%	:46%	1:19%
16Nov89-9Lrl fst 6f	:22%	:45%	1:11
3Nov89-9Lrl fst 7f	:23%	:46%	1:27%
28Oct89-10Lrl fst 6f	:22%	:46	1:10%
17Oct89-9Lrl sly 6f	:22%	:46%	1:20
8Oct89-4Pim fst 6f	:22%	:46%	1:12%

Speed Index: Last Race: +10.0

Ch. f. 4, by Double Zeus—Jovial Lupine, by Jolly Johu

Br.—Hikel D N (Md)

Tr.—Leatherbury King T

5 2 3nk 1nd 11 12	Johnston M T5 b 114	2.40
6 2 2nd 2 1/2 2nd 12	Johnston M T5 b 117	*.60
5 1 1nd 1 1/2 12 15	Johnston M T5 b 109	*.60
2 3 2nd 2nd 1 1/2 16	Johnston M T5 b 109	6.60
4 2 21 2nd 23 55	Duarte J C b 115	*1.70
4 6 2nd 2nd 2nd 28	Duarte J C b 114	11.70
4 1 12 13 14 12	Rocco J b 114	2.80
4 5 54 43 45 67	Rocco J b 114	9.40
1 4 12 14 1 1/2 35	Duarte J C b 114	13.40
9 4 2 1/2 21 11 2nd	Duarte J C b 114	13.90

3-Race Avg.: +8.0

10-Race Avg.: +2.0

Overall Avg.: +2.0

109

Lifetime	1990	3	3	0	0	\$34,200
15 6 2 1	1989	12	3	2	1	\$37,230

## Double Artemis

Own.—Jenkins R

30Nov89-9Lrl fst 6f	:22%	:46%	1:19%
16Nov89-9Lrl fst 6f	:22%	:45%	1:11
3Nov89-9Lrl fst 7f	:23%	:46%	1:27%
28Oct89-10Lrl fst 6f	:22%	:46	1:10%
17Oct89-9Lrl sly 6f	:22%	:46%	1:20
8Oct89-4Pim fst 6f	:22%	:46%	1:12%
17Sep89-10Pim fst 6f	:22%	:46%	1:11%
23Aug89-8Pha fst 5f	:22%	:47	1:00
11Jly89-9Lrl fst 7f	:22%	:45%	1:24%
1Jly89-10Lrl fst 6f	:22%	:45%	1:11%

Speed Index: Last Race: -3.0

Ch. f. 3(Apr), by Double Zeus—Jovial Lupine, by Jolly Johu

\$25,000

Br.—Hikel D N (Md)

Tr.—Wilson Gregory L

4 2 21 2nd 23 55	Duarte J C b 115	*1.70
4 6 2nd 2nd 2nd 28	Duarte J C b 114	11.70
4 1 12 13 14 12	Rocco J b 114	2.80
4 5 54 43 45 67	Rocco J b 114	9.40
1 4 12 14 1 1/2 35	Duarte J C b 114	13.40
9 4 2 1/2 21 11 2nd	Duarte J C b 114	13.90
4 7 2 1/2 35 61 62	Stacy A T b 113	11.80
5 6 2nd 2nd 41 44	Gomez G K5 b 107	*1.30
1 5 1nc 1 7 12 72	Pino M G b 113	28.10
5 6 42 32 44 68	Stacy A T b 110	13.00

3-Race Avg.: -2.6

10-Race Avg.: -5.4

Overall Avg.: -5.4

1095

Lifetime	1989	11	2	2	1	\$27,630
11 2 2 1	1988	0	M	0	0	

## TENTH RACE

Laurel

MARCH 10, 1990

7 FURLONGS. (1.21%) 22nd Running THE CONNIVER HANDICAP. Purse \$60,000 Guaranteed. A Handicap for Fillies and Mares. 3-year-olds and upward. (Registered Maryland-breds.) By subscription of \$50 each, which should accompany the nomination, \$300 to pass the entry box, \$300 additional to start, with \$60,000 Guaranteed, of which 60% to the winner, 20% to second, 11% to third, 6% to fourth and 3% to fifth. Weights five days before the race. Field will be limited to fourteen (14) starters with preference to high weights on the scale. Four (4) horses may be placed on the also eligible list. Starters to be named through the entry box by the usual time of closing. Trophy to the owner of the winner. Closed Thursday, February 15, 1990, with 28 nominations.

Value of race \$60,000; value to winner \$36,000; second \$12,000; third \$6,600; fourth \$3,600; fifth \$1,800. Mutuel pool \$67,768. Exacta Pool \$128,818.

Value of race \$60,000; value to winner \$36,000; second \$12,000; third \$6,600; fourth \$3,600; fifth \$1,800. Mutuel pool \$57,768. Exacta Pool \$128,818.											
Last Raced	Horse	Eqt.	A.Wt	PP	St	1/4	1/2	Str	Fin	Jockey	Odds
20Feb90 9Lrl1	Double Artemis	b	4	109	1	5	13 1/2	15	13 1/2	12	Johnston M T
24Feb90 8Lrl4	Fat and Foxy	b	5	113	6	1	3 1/2	23	26	Hutton G W	2.20
25Feb90 4Lrl3	Bearing Testamony	b	4	108	4	4	43	43	33	34	Stacy A T
24Feb90 8Lrl2	Saucy Gaylord	b	5	110	3	2	5hd	52 1/2	44	42	Luzzi M J
28Jan90 3Pha1	Debs Prospect	b	5	110	2	6	7	7	51	59	Nicol P A Jr
18Feb90 10Lrl7	Skating Lady	b	4	106	7	7	62	62	7	612	Nunez A
6Feb90 8Lrl6	Bullet Assault	b	4	109	5	3	21 1/2	32	62 1/2	7	Marchant T M

OFF AT 4:50. Start good. Won driving. Time, :22%, :45%, 1:11, 1:24 1/2 Track fast.

## \$2 Mutuel Prices:

1-DOUBLE ARTEMIS	4.40	2.80	2.40
7-FAT AND FOXY		3.20	2.80
5-BEARING TESTAMONY			3.00
\$2 EXACTA 1-7 PAID \$11.60.			

Ch. f. by Double Zeus—Jovial Lupine, by Jolly Johu. Trainer Leatherbury King T. Bred by Hikel D N (Md). DOUBLE ARTEMIS accelerated to a clear lead, was set down in midstretch and held off FAT AND FOXY. The latter closed outside. BEARING TESTAMONY finished evenly. SAUCY GAYLORD was outrun. DEBS PROSPECT was outrun. BULLET ASSAULT faltered.

Owners—1, Bassford Elaine L; 2, Benjamin A B; 3, Bender H M; 4, Reynolds D P; 5, Kissoon R B; 6, Meyer R J; 7, Spanish Stables.

Trainers—1, Leatherbury King T; 2, Devereux Joseph A; 3, Murray Lawrence E; 4, Alfano Ronald A; 5, Kissoon Raphael B; 6, Owens Josephine S; 7, Testerman Valora.

Overweight: Debs Prospect 2 pounds; Bullet Assault 3.

Scratched—Safely Kept (1Mar90GP1).

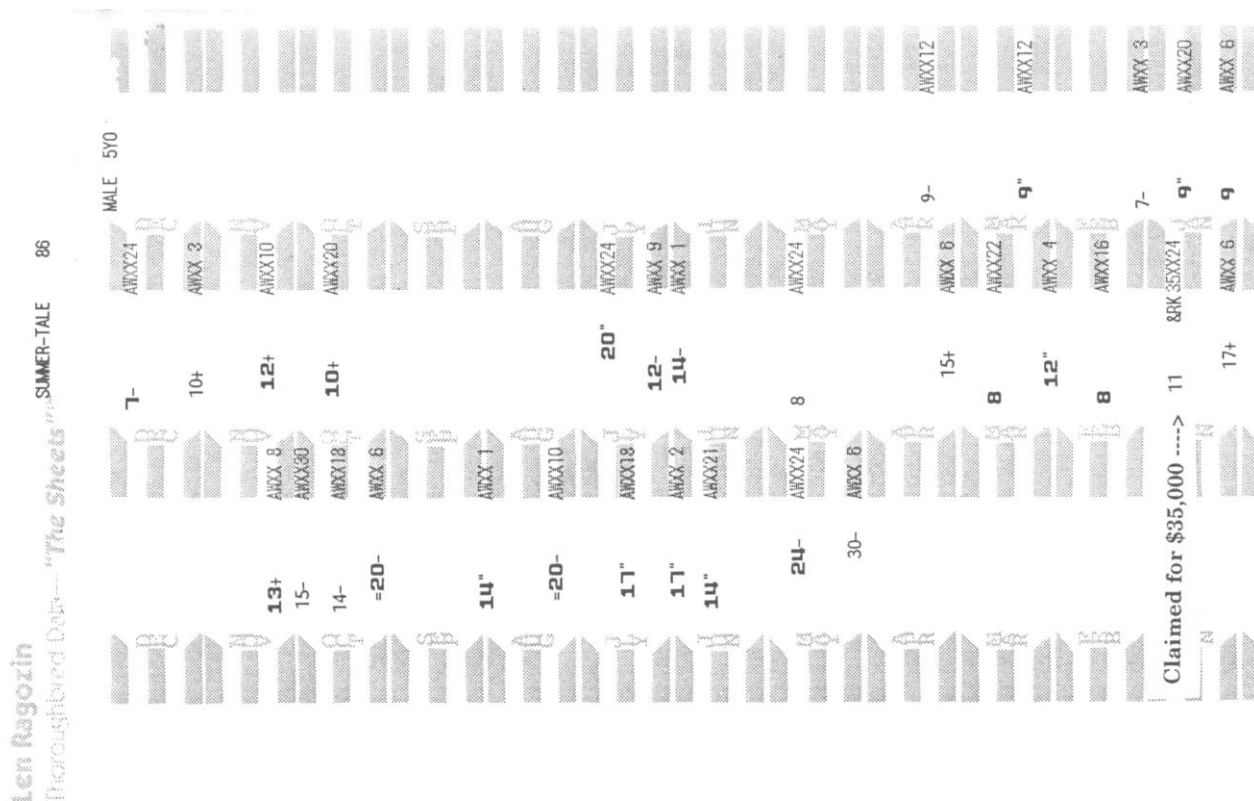
## Len Ragozin on SUMMER TALE:

**Summer Tale** was the first horse that I recommended strongly to Gold’N’Oats Stable (one of the leading win percentage stables in the country.) He was the perfect age for a claim — late three to early four. More important, he had a very strong condition line which showed he was likely to improve by two different analyses — soundness and improvement. Either one of those features would have been good enough reason for a claim. In fact, **Summer Tale** passed both tests. As a bonus, he was a New York bred running in New York. With all these advantages, he was irresistible.

Here is the reasoning for my analysis. If all of his three year old races were the same — 14½ — I would have liked him because he went through his campaign without showing any adverse reactions to strong efforts. (His only two bad races were on the turf.) As it happened, his 13¼ at the end of the year was a slight improvement over the 14½ of his third lifetime start. This development indicated the horse was sound and in good condition. Since sound, forward moving horses get stronger at age four, he was a prime candidate for improvement. And since he had been running near the same level all his racing life, he was still eligible for all of the 6 to 9 points of development most sound horses make.

**Summer Tale’s** previous owners saw their horse destroyed by stakes company, then well beaten as a long shot with \$50,000 claimers. The owners had no idea how strong their horse was or his true value. They dropped him in for \$35,000 and we took him.

**Summer Tale** went on to earn almost \$200,000, including New-York-bred stakes.



## Len Ragozin on **PASSING SHIPS**:

**Passing Ships** wasn't claimed because I thought he would display new talent. I didn't think he would ever run much better than that 6- he ran in October of his four year old campaign. However, when he "paired up" that 6- a month later, **Passing Ships** indicated that effort hadn't bothered him and he might be just as sound and fast as a five year old.

The logic behind recommending this claim was that the horse could earn much more money under different management running in different types of races. **Passing Ships** was mainly running in high priced claiming sprints. The competition in these types of races is fierce and you tend to find a "monster" in every one of these races.

His line on *The Sheets* indicated he was just as much a quality router as a sprinter. I recommended Gold'N'Oats Stable run **Passing Ships** in the marathon graded stakes races at the end of the New York season. Our experience is that most championship caliber horses won't run in these marathons, or are too exhausted after a long season to put in their best efforts. **Passing Ships** won both of those races. In fact, 13 years earlier I won the same two races with **Frampton Delight** — a horse I claimed myself for \$25,000.

**Passing Ships** won \$270,000 for Gold'N'Oats in one year (three times more than the previous owner won in the previous year.) Providing a storybook finish, a buyer turned up looking for a horse to run in a prestigious marathon race — for princes only! — in Saudi Arabia. **Passing Ships** was sold for \$280,000 and he won that million-dollar race!

Len Ragozin Thoroughbred Data — "The Sheets"					
12 RACES 87	13 RACES 88	13 RACES 89	PASSING SHIPS	84	1 RACE 90
13- .11+ '9	AWAQ29 AWME12 WAWAQ 4	AWAQ19 AWAQ16 AWAQ20	6- 6 7 7 8+	WAWAQ31 WAWAQ16 WAWAQ20	
13	AWAQ16	AWAQ19 WAWBE13 WAWBE 6	10	WAWAQ23 WAWBE13 W75BE27	
-17+ 15+ 15+ .13"	AWAQ21 WAWBE11 AWME 1 QWBE18	AWAQ19 WAWBE13 WAWBE 6 WAWBE16	6- 13 9+	WAWAQ23 WAWBE13 W75BE27 WAWBE16	
	AWAQ21 WAWBE11 AWME 1 QWBE18	AWAQ19 WAWBE13 WAWBE 6 WAWBE16	6- 13 9+	WAWAQ23 WAWBE13 W75BE27 WAWBE16	
	AWAQ21 WAWBE11 AWME 1 QWBE18	AWAQ19 WAWBE13 WAWBE 6 WAWBE16	6- 13 9+	WAWAQ23 WAWBE13 W75BE27 WAWBE16	
	AWAQ21 WAWBE11 AWME 1 QWBE18	AWAQ19 WAWBE13 WAWBE 6 WAWBE16	6- 13 9+	WAWAQ23 WAWBE13 W75BE27 WAWBE16	
	AWAQ21 WAWBE11 AWME 1 QWBE18	AWAQ19 WAWBE13 WAWBE 6 WAWBE16	6- 13 9+	WAWAQ23 WAWBE13 W75BE27 WAWBE16	
	AWAQ21 WAWBE11 AWME 1 QWBE18	AWAQ19 WAWBE13 WAWBE 6 WAWBE16	6- 13 9+	WAWAQ23 WAWBE13 W75BE27 WAWBE16	
	AWAQ21 WAWBE11 AWME 1 QWBE18	AWAQ19 WAWBE13 WAWBE 6 WAWBE16	6- 13 9+	WAWAQ23 WAWBE13 W75BE27 WAWBE16	
	AWAQ21 WAWBE11 AWME 1 QWBE18	AWAQ19 WAWBE13 WAWBE 6 WAWBE16	6- 13 9+	WAWAQ23 WAWBE13 W75BE27 WAWBE16	
	AWAQ21 WAWBE11 AWME 1 QWBE18	AWAQ19 WAWBE13 WAWBE 6 WAWBE16	6- 13 9+	WAWAQ23 WAWBE13 W75BE27 WAWBE16	
	AWAQ21 WAWBE11 AWME 1 QWBE18	AWAQ19 WAWBE13 WAWBE 6 WAWBE16	6- 13 9+	WAWAQ23 WAWBE13 W75BE27 WAWBE16	
	AWAQ21 WAWBE11 AWME 1 QWBE18	AWAQ19 WAWBE13 WAWBE 6 WAWBE16	6- 13 9+	WAWAQ23 WAWBE13 W75BE27 WAWBE16	
	AWAQ21 WAWBE11 AWME 1 QWBE18	AWAQ19 WAWBE13 WAWBE 6 WAWBE16	6- 13 9+	WAWAQ23 WAWBE13 W75BE27 WAWBE16	
	AWAQ21 WAWBE11 AWME 1 QWBE18	AWAQ19 WAWBE13 WAWBE 6 WAWBE16	6- 13 9+	WAWAQ23 WAWBE13 W75BE27 WAWBE16	
	AWAQ21 WAWBE11 AWME 1 QWBE18	AWAQ19 WAWBE13 WAWBE 6 WAWBE16	6- 13 9+	WAWAQ23 WAWBE13 W75BE27 WAWBE16	
	AWAQ21 WAWBE11 AWME 1 QWBE18	AWAQ19 WAWBE13 WAWBE 6 WAWBE16	6- 13 9+	WAWAQ23 WAWBE13 W75BE27 WAWBE16	
	AWAQ21 WAWBE11 AWME 1 QWBE18	AWAQ19 WAWBE13 WAWBE 6 WAWBE16	6- 13 9+	WAWAQ23 WAWBE13 W75BE27 WAWBE16	
	AWAQ21 WAWBE11 AWME 1 QWBE18	AWAQ19 WAWBE13 WAWBE 6 WAWBE16	6- 13 9+	WAWAQ23 WAWBE13 W75BE27 WAWBE16	
	AWAQ21 WAWBE11 AWME 1 QWBE18	AWAQ19 WAWBE13 WAWBE 6 WAWBE16	6- 13 9+	WAWAQ23 WAWBE13 W75BE27 WAWBE16	
	AWAQ21 WAWBE11 AWME 1 QWBE18	AWAQ19 WAWBE13 WAWBE 6 WAWBE16	6- 13 9+	WAWAQ23 WAWBE13 W75BE27 WAWBE16	
	AWAQ21 WAWBE11 AWME 1 QWBE18	AWAQ19 WAWBE13 WAWBE 6 WAWBE16	6- 13 9+	WAWAQ23 WAWBE13 W75BE27 WAWBE16	
	AWAQ21 WAWBE11 AWME 1 QWBE18	AWAQ19 WAWBE13 WAWBE 6 WAWBE16	6- 13 9+	WAWAQ23 WAWBE13 W75BE27 WAWBE16	
	AWAQ21 WAWBE11 AWME 1 QWBE18	AWAQ19 WAWBE13 WAWBE 6 WAWBE16	6- 13 9+	WAWAQ23 WAWBE13 W75BE27 WAWBE16	
	AWAQ21 WAWBE11 AWME 1 QWBE18	AWAQ19 WAWBE13 WAWBE 6 WAWBE16	6- 13 9+	WAWAQ23 WAWBE13 W75BE27 WAWBE16	
	AWAQ21 WAWBE11 AWME 1 QWBE18	AWAQ19 WAWBE13 WAWBE 6 WAWBE16	6- 13 9+	WAWAQ23 WAWBE13 W75BE27 WAWBE16	
	AWAQ21 WAWBE11 AWME 1 QWBE18	AWAQ19 WAWBE13 WAWBE 6 WAWBE16	6- 13 9+	WAWAQ23 WAWBE13 W75BE27 WAWBE16	
	AWAQ21 WAWBE11 AWME 1 QWBE18	AWAQ19 WAWBE13 WAWBE 6 WAWBE16	6- 13 9+	WAWAQ23 WAWBE13 W75BE27 WAWBE16	
	AWAQ21 WAWBE11 AWME 1 QWBE18	AWAQ19 WAWBE13 WAWBE 6 WAWBE16	6- 13 9+	WAWAQ23 WAWBE13 W75BE27 WAWBE16	
	AWAQ21 WAWBE11 AWME 1 QWBE18	AWAQ19 WAWBE13 WAWBE 6 WAWBE16	6- 13 9+	WAWAQ23 WAWBE13 W75BE27 WAWBE16	
	AWAQ21 WAWBE11 AWME 1 QWBE18	AWAQ19 WAWBE13 WAWBE 6 WAWBE16	6- 13 9+	WAWAQ23 WAWBE13 W75BE27 WAWBE16	
	AWAQ21 WAWBE11 AWME 1 QWBE18	AWAQ19 WAWBE13 WAWBE 6 WAWBE16	6- 13 9+	WAWAQ23 WAWBE13 W75BE27 WAWBE16	
	AWAQ21 WAWBE11 AWME 1 QWBE18	AWAQ19 WAWBE13 WAWBE 6 WAWBE16	6- 13 9+	WAWAQ23 WAWBE13 W75BE27 WAWBE16	
	AWAQ21 WAWBE11 AWME 1 QWBE18	AWAQ19 WAWBE13 WAWBE 6 WAWBE16	6- 13 9+	WAWAQ23 WAWBE13 W75BE27 WAWBE16	
	AWAQ21 WAWBE11 AWME 1 QWBE18	AWAQ19 WAWBE13 WAWBE 6 WAWBE16	6- 13 9+	WAWAQ23 WAWBE13 W75BE27 WAWBE16	
	AWAQ21 WAWBE11 AWME 1 QWBE18	AWAQ19 WAWBE13 WAWBE 6 WAWBE16	6- 13 9+	WAWAQ23 WAWBE13 W75BE27 WAWBE16	
	AWAQ21 WAWBE11 AWME 1 QWBE18	AWAQ19 WAWBE13 WAWBE 6 WAWBE16	6- 13 9+	WAWAQ23 WAWBE13 W75BE27 WAWBE16	
	AWAQ21 WAWBE11 AWME 1 QWBE18	AWAQ19 WAWBE13 WAWBE 6 WAWBE16	6- 13 9+	WAWAQ23 WAWBE13 W75BE27 WAWBE16	
	AWAQ21 WAWBE11 AWME 1 QWBE18	AWAQ19 WAWBE13 WAWBE 6 WAWBE16	6- 13 9+	WAWAQ23 WAWBE13 W75BE27 WAWBE16	
	AWAQ21 WAWBE11 AWME 1 QWBE18	AWAQ19 WAWBE13 WAWBE 6 WAWBE16	6- 13 9+	WAWAQ23 WAWBE13 W75BE27 WAWBE16	
	AWAQ21 WAWBE11 AWME 1 QWBE18	AWAQ19 WAWBE13 WAWBE 6 WAWBE16	6- 13 9+	WAWAQ23 WAWBE13 W75BE27 WAWBE16	
	AWAQ21 WAWBE11 AWME 1 QWBE18	AWAQ19 WAWBE13 WAWBE 6 WAWBE16	6- 13 9+	WAWAQ23 WAWBE13 W75BE27 WAWBE16	
	AWAQ21 WAWBE11 AWME 1 QWBE18	AWAQ19 WAWBE13 WAWBE 6 WAWBE16	6- 13 9+	WAWAQ23 WAWBE13 W75BE27 WAWBE16	
	AWAQ21 WAWBE11 AWME 1 QWBE18	AWAQ19 WAWBE13 WAWBE 6 WAWBE16	6- 13 9+	WAWAQ23 WAWBE13 W75BE27 WAWBE16	
	AWAQ21 WAWBE11 AWME 1 QWBE18	AWAQ19 WAWBE13 WAWBE 6 WAWBE16	6- 13 9+	WAWAQ23 WAWBE13 W75BE27 WAWBE16	
	AWAQ21 WAWBE11 AWME 1 QWBE18	AWAQ19 WAWBE13 WAWBE 6 WAWBE16	6- 13 9+	WAWAQ23 WAWBE13 W75BE27 WAWBE16	
	AWAQ21 WAWBE11 AWME 1 QWBE18	AWAQ19 WAWBE13 WAWBE 6 WAWBE16	6- 13 9+	WAWAQ23 WAWBE13 W75BE27 WAWBE16	
	AWAQ21 WAWBE11 AWME 1 QWBE18	AWAQ19 WAWBE13 WAWBE 6 WAWBE16	6- 13 9+	WAWAQ23 WAWBE13 W75BE27 WAWBE16	
	AWAQ21 WAWBE11 AWME 1 QWBE18	AWAQ19 WAWBE13 WAWBE 6 WAWBE16	6- 13 9+	WAWAQ23 WAWBE13 W75BE27 WAWBE16	
	AWAQ21 WAWBE11 AWME 1 QWBE18	AWAQ19 WAWBE13 WAWBE 6 WAWBE16	6- 13 9+	WAWAQ23 WAWBE13 W75BE27 WAWBE16	
	AWAQ21 WAWBE11 AWME 1 QWBE18	AWAQ19 WAWBE13 WAWBE 6 WAWBE16	6- 13 9+	WAWAQ23 WAWBE13 W75BE27 WAWBE16	
	AWAQ21 WAWBE11 AWME 1 QWBE18	AWAQ19 WAWBE13 WAWBE 6 WAWBE16	6- 13 9+	WAWAQ23 WAWBE13 W75BE27 WAWBE16	
	AWAQ21 WAWBE11 AWME 1 QWBE18	AWAQ19 WAWBE13 WAWBE 6 WAWBE16	6- 13 9+	WAWAQ23 WAWBE13 W75BE27 WAWBE16	
	AWAQ21 WAWBE11 AWME 1 QWBE18	AWAQ19 WAWBE13 WAWBE 6 WAWBE16	6- 13 9+	WAWAQ23 WAWBE13 W75BE27 WAWBE16	
	AWAQ21 WAWBE11 AWME 1 QWBE18	AWAQ19 WAWBE13 WAWBE 6 WAWBE16	6- 13 9+	WAWAQ23 WAWBE13 W75BE27 WAWBE16	
	AWAQ21 WAWBE11 AWME 1 QWBE18	AWAQ19 WAWBE13 WAWBE 6 WAWBE16	6- 13 9+	WAWAQ23 WAWBE13 W75BE27 WAWBE16	
	AWAQ21 WAWBE11 AWME 1 QWBE18	AWAQ19 WAWBE13 WAWBE 6 WAWBE16	6- 13 9+	WAWAQ23 WAWBE13 W75BE27 WAWBE16	
	AWAQ21 WAWBE11 AWME 1 QWBE18	AWAQ19 WAWBE13 WAWBE 6 WAWBE16	6- 13 9+	WAWAQ23 WAWBE13 W75BE27 WAWBE16	
	AWAQ21 WAWBE11 AWME 1 QWBE18	AWAQ19 WAWBE13 WAWBE 6 WAWBE16	6- 13 9+	WAWAQ23 WAWBE13 W75BE27 WAWBE16	
	AWAQ21 WAWBE11 AWME 1 QWBE18	AWAQ19 WAWBE13 WAWBE 6 WAWBE16			

© Ragozin Data & Publishing - *The Sheets* 23

## Part II

# The Press

Over the past three decades Len Ragozin, *The Sheets*, and Ragozin's followers, have received much publicity. Journalists seem to find endless story ideas pertaining to some aspect of The Sheets. Whether it's an article about Ragozin's notorious demands for accuracy, or for the spectacular scores made by the "Raggies", pieces keep cropping up in a variety of publications. *The New York Times*, *Sports Illustrated*, *Washington Post*, and of course the *Daily Racing Form* are represented here.

The clippings that follow are just a smattering of the press that Ragozin has received. We've reproduced pieces that are generally pretty entertaining and at times educational, though not all of the stories are entirely favorable. (Andy Beyer's work is especially lively, though tinged by his skepticism of our methods.)

Enjoy these for what they are, but realize, they're not as much fun as *The Sheets!*

## FEATURES

# Sheets put spin on New Top

## Stable uses Ragozin data to discover its successful claims

By DALE OMENSON  
*Daily Racing Form correspondent*

ALBANY, Calif. — One of the leading owners at the recent Golden Gate Fields meeting was New Top Stable, a relatively new outfit that currently has 45 or so horses at four different tracks around the country.

New Top Stable, comprised of four people, is basically a claiming operation that bases most of its decisions on the Ragozin Sheets. Len Friedman of New York works for Ragozin and manages the New Top Stable racing operation. The other members are Lou Donato of Toronto, Veronica Chesterton of New Hampshire and Jaime Manion of Boston.

According to Friedman, New Top Stable was created in early 1996 and has been a money-making operation so far.

"We bought a 3-year-old filly named Ginny Lynn in January or early February for \$100,000 and sold her in October for \$450,000, after she had won a couple stakes," Friedman said. "That one horse put us way ahead, but even without (counting) her, we're 25 to 30 percent ahead."

New Top, which expanded to Northern California around August, has certainly done well since then, despite a slow start locally. During the recent 21-day Golden Gate meeting, the stable won nine races from 27 starters and earned \$98,837. That put New Top second only to Golden Eagle Farm's 10 winners and third to Golden Eagle and Ron Crockett in stable earnings.

New Top's local trainer is Brent

Actually, Friedman and Sumja both say that Friedman picks out all the claims and also suggests where and when to run. However, he gives Sumja veto power over the claims.

"Brent can turn down any horse," Friedman said. "I've asked him to claim four or five in Southern California, but he's turned them all down and, so far as I can tell, he's been right on every one."

"Sometimes I will tell him to lean in favor of claiming a horse, like the (Jerry) Hollendorfer filly (The Tappin' Wizard, a 3-year-old filly whom New Top claimed from a victory in an \$8,500 maiden claiming race Jan. 1, came back to win for \$16,000 Jan. 10). The (Ragozin) number she got in the race before we claimed her was good enough to win for \$16,000. She backed off a lit-

tle (from her previous high number) the day we claimed her, but it was still good and it enabled us to run her back in nine days. If she had run another top, I wouldn't have run her back so soon."

Speaking of a "top," that is how New Top Stable got its name. In Ragozin Sheet terminology, a "new top" is when a horse runs better than it ever has before. According to Friedman, Jaime Manion and her husband, Harry, came up with the name.

Friedman has been using the Ragozin Sheets since the late 1960s, and has been involved with racing as an owner and stable manager off and on over the years. In early 1995, he started putting together a racing stable that would essentially be a Ragozin Sheet-based claiming operation, and all of the current New Top members are Ragozin customers. The only one who had horses at the time was Donato, and he "merged them into the stable and then we all put up some money and started claiming," Friedman said.

It is clear from talking with Friedman and Sumja that they both respect the other's opinions and have no trouble reaching common agreements.

"Brent is very open-minded," Friedman said. "I pretty much pick where we are going to run the horses, but it's all after consultation with Brent. A lot of times I've gone with his opinion. Part of the claiming game is the poker-playing. Sometimes you want to lose a horse, and the best way to do that is not necessarily by dropping it."

One of New Top's most successful recent claims was Yafollowme. Friedman took him for \$12,500, then won four straight for \$20,000 to \$23,000 before losing him for \$23,000 from the fourth win. That, however, had nothing to do with the poker-playing aspect, according to



SUMJA: Trains for New Top Stable.

Friedman.

"I just feel the right way is to be aggressive and win races," he said. "He was a perfectly sound horse."

Despite New Top's success,

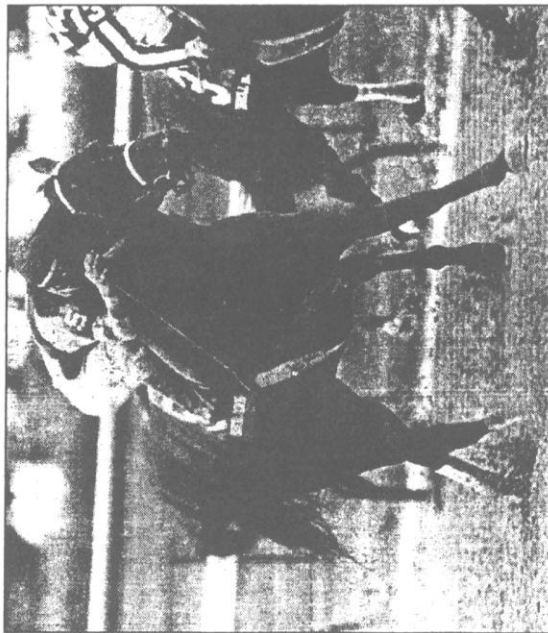
Friedman has been around long enough to know that there will be ups and downs.

"It's all a gamble," he said. "I look for horses who, for the most part, are gradually improving. I start by looking at the sheets for patterns I like. Then I look at other things. But I've made a lot of bad claims. It's just a matter of trying to get the odds in your favor. A lot of the bad claims looked very similar to the good ones."

For Sumja, there is no downside to training for New Top.

"I'm very fortunate to have someone like Len to learn from," he said. "I talk to him day in and day out and have picked up some things."

Also, he has filled a big void in my barn. I have other people who will let me claim a horse for them if I see one I want, but basically they are breeders or they prefer to buy horses privately. Now my barn is involved in every side of racing, and it has made it a lot more fun."



GINNY LYNN: Stakes winner is New Top Stable's biggest success story.

## Speed Ratings Comparison

A Nevada based outfit, SPORT STAT, recently compared published "speed ratings" for the period from May 25 to June 25 of 1994 at Arlington Park, Belmont, Calder and Hollywood Park. **Ragozin** and six other speed figure services submitted their race-by-race ratings for all the horses running at each track each day. Some pace figures were also evaluated.

SPORT STAT then evaluated how the services performed in three distinct categories:

1Horses that had the best last number.

2Horses that had the best number in their last three starts.

3Horses that had the best number in their last three starts and went off at odds of 4-1 or better.

Here is a summary of the findings for the major services that gave race-by-race ratings and covered the four tracks.

### Best Last Figure

**RAGOZIN** -0.15 return per dollar bet

**BEYER** -0.18

**THOROGRAPH** -0.24

### Best Figure of Last 3 Starts

**RAGOZIN** -0.04

**THOROGRAPH** -0.12

**BEYER** -0.15

### In the 3-starts category:

Average return of all speed services (excluding Ragozin) was -0.12.

Average return of pace figures was -0.15.

### Best Figure, Last 3 Starts (odds > 4-1)

**RAGOZIN** +0.06

**BEYER** -0.08

**THOROGRAPH** -0.10

Average return of all speed services (excluding Ragozin) was -0.05.

Average return of pace figures was -0.17.

SPORT STAT also reported what the average odds were for the horses with the best figure of the last three starts.

Pace figures	8.8 to 1
Speed Figures (except Ragozin)	5.0
<b>THOROGRAPH</b>	4.8
<b>BEYER</b>	4.4
<b>RAGOZIN</b>	4.2

No distinction was made between grass and dirt numbers, even if today's race was on a different surface. Also note that a horse who ran 16, 35, 35 in its last three races was preferred over a horse who ran 19, 18, 17.

All these limitations aside, the more accurate your numbers are the better you figure to do.

As the categories move toward an approach that figures to do better (playing the recent fastest horse, but not necessarily based on its last number) more accurate numbers figure to make more of a difference. In our somewhat biased opinion, SPORT STAT's study proves this out.

The impressive part of the survey from our viewpoint is that the RAGOZIN money returns were the best of all the "experts", even though the horses with best RAGOZIN ratings went off at lower odds.

Two other points of interest can be gleaned from the study. First, the pace figures for the services that offered them did considerably poorer than their final numbers. This may not indicate that pace figures have no value in theory, but it does tend to support our feeling that the way other services make pace figures now has so many conceptual problems built in as to make their pace analysis a random guess that has no predictive value. Second, the results of this study call into question the value of all the fancy pattern theory analysis that I like to feel is at the heart of whatever success I have at the betting windows.

This study indicates that you can have a fairly good percentage profit just by looking at the last three RAGOZIN numbers for each horse in a race and playing the horse that has the best individual figure (after correcting for today's weight), whenever that horse goes off at odds of 4-1 or better. The positive return could possibly be increased even further if you eliminate any horse who earned that best figure only in its most recent race, since those horses taken by themselves showed a net betting loss.

Since I'm doing OK with my current approach (and since I greatly enjoy trying to uncover pattern plays), I'm not tempted to switch over to a new approach. But if there are players who are less stubborn than I, or who are not satisfied with their results, waiting for these fast horse plays at 4-1 or over might be an interesting experiment. If anyone does it for a significant length of time (at least three months), please keep a record of all the plays so that we can look at and evaluate them. I would suggest only using dirt numbers for dirt races and grass numbers for grass races, but I would make no distinctions based on the distance of the races or on the condition of the dirt or grass. I would also use no numbers (except in Southern California) more than four months prior to the race you're betting. Good luck to anyone trying this approach!

Len Friedman

(For those interested in getting the complete comparison report, SPORT STAT is located at 2540 Cherrywood, Las Vegas, NV 89108. Tel: 800-300-8010. The report is priced at \$45.)

May, 1990

From Phillips **Racing** Newsletter:

This Northern California reader wasn't too impressed by all the "experts" at the recent **Handicapping Expo** in Las Vegas . . .

Many thanks to Greg Lawlor for putting this meeting together and selecting a fine brand new hotel with great food and adequate meeting facilities.

However I had some great disappointments when it came to the ability of the experts to pick winning horses. In other words, rhetoric is all fine and dandy and there are almost as many theories of handicapping as there are horse players, but the bottom line comes down to your ability to select the winning horse.

Although many entrepreneurs brought along all kinds of computerized hardware and methods, there was a surprising lack of "live" demonstrations of the systems that they were selling. It is one thing to illustrate how a system or how a computer works with hypothetical races, but quite another thing to see it working and use it as a basis for selecting winning horses. It seemed to me that very few of the people who had this heavy artillery actually were willing to use it. This furthered increased my skepticism.

**The exception was Ragozin. He was the only handicapper who picked quite a few races all across the country with a pretty good record. At one time I checked and he was fairly close to 50%. The other people who put their picks on the central board skipped many races and had very poor results.**